



HeatPro® Heat Pumps

FOR IN-GROUND AND ABOVE-GROUND POOLS AND SPAS

The Hayward Titanium HeatPro heat pump provides an energy efficient solution to your pool heating options. With its Titanium Heat Exchanger and Hayward Quiet Technology, HeatPro heat pumps heat pool water more efficiently for a fraction of the cost of gas while maintaining a quiet relaxed backyard environment. Depending on individual use and application of your pool, a heat pump may be right for you.

Titanium Heat Exchanger



Titanium counter-flow heat exchanger for unrivaled, uncompromising and trouble-free performance — even under the harshest conditions.

Quiet Technology



Profiled fan blade design provides improved airflow and quiet operation.



Acoustic compressor cover further reduces compressor sound levels.

High Performance Evaporator Coil and Union Connections



Ultra Gold corrosion resistant evaporator coil fin provides excellent durability near coastal and other corrosive environments.

Digital L.E.D. Control Panel



Easy to read digital temperature display with electronic frost control and temperature lock-out capability.

Footprint



2" x 2 1/2" Union Connections for high efficiency plumbing and easy installation and maintenance.

Compact footprint allows for easy installations, is ideal for retrofit replacements, and has integrated hurricane tie-downs to meet local codes without the need for accessory kits.



HP21104T HeatPro



HP21404T HeatPro



Heating

Specifications & Dimensions

Model Number	BTU	C.O.P.	Platform	Voltage Hertz/Phase	MIN Circuit Protection	Diameter Width x Depth	Ship Ht.	Wt. (lbs.)	Unit Wt. (lbs.)
95,000 to 140,000 BTU HEAT									
HP21004T	95,000	5.7	Square	240/60/1	50A	30 1/4" x 34"	37"	270	230
HP21124T	110,000	5.7	Square	240/60/1	50A	30 1/4" x 34"	37"	285	245
HP21104T	110,000	5.7	Round	240/60/1	50A	31 1/4"	40"	285	245
HP21104TC*	110,000	5.7	Round	240/60/1	50A	31 1/4"	40"	285	245
HP21254T	125,000	5.7	Square	240/60/1	50A	30 1/4" x 34"	37"	285	245
HP21404T	140,000	5.7	Square	240/60/1	50A	30 1/4" x 34"	44"	320	280

120,000 BTU HEAT / COOL									
HP31204T	120,000	5.7	Square	240/60/1	50A	30 1/4" x 34"	37"	290	250

45,000 to 50,000 BTU HEAT									
HP50HA	45,000	5.4	Horizontal Fan	208-230/60/1	20A	41 1/2" x 17 1/4" x 25 1/2"	160	120	120
HP50TA	50,000	5.4	Square	240/60/1	20A	30 1/4" x 34"	29"	160	120

NOTE: *Low Ambient Operation



Clip Art



HP21104T HeatPro



HP21404T HeatPro

For replacement parts see pages 216–221.

Universal H-Series Low NOx

FOR IN-GROUND POOLS AND SPAS

Standard
Cupro Nickel
Heat Exchanger!



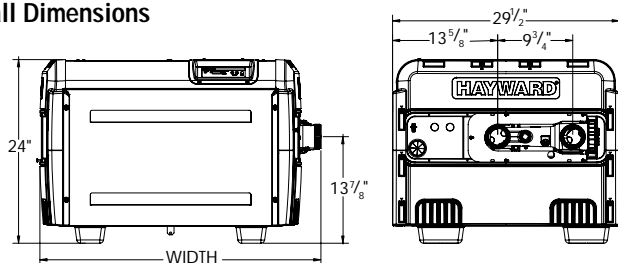
H400FDN Universal H-Series Low NOx Heater

Specifications & Dimensions

Silicon Nitride Hot Surface Electronic Ignition, Dual Electronic Thermostat

Model Number	Gas Type	BTU Input	Thermal Efficiency	Heater Width	Ctn. Qty.	Ctn. Weight
H150FDN	Natural	150,000	83.0%	21 1/2"	1	135 lbs.
H150FDP	Propane					
H200FDN	Natural	199,900	83.0%	24 3/4"	1	140 lbs.
H200FDP	Propane					
H250FDN	Natural	250,000	83.0%	28"	1	165 lbs.
H250FDP	Propane					
H300FDN	Natural	300,000	83.0%	30"	1	175 lbs.
H300FDP	Propane					
H350FDN	Natural	350,000	82.7%	33 1/4"	1	195 lbs.
H350FDP	Propane					
H400FDN	Natural	399,900	83.0%	36 1/2"	1	195 lbs.
H400FDP	Propane					
H500FDN	Natural	500,000	83.0%	41"	1	245 lbs.
H500FDP	Propane					

Overall Dimensions



Clip Art



H400FDN Series



H400FDN Series

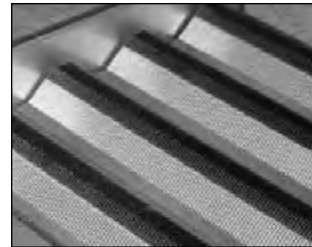
The Hayward Universal H-Series gas heater is the "universal" energy efficient remedy for any new or existing pool or spa. An industry leading hydraulic design reduces circulation pump run time to provide energy savings of up to 18% when compared to less efficient competitors. The energy efficiency of the Universal H-Series gas heater combines with environmentally friendly low NOx emissions, a standard cupro nickel heat exchanger and ultimate installation flexibility on new or existing equipment pads to responsibly heat a pool or spa today and for years to come.

The forced draft system in the Universal H-Series constantly moves air through the combustion chamber at a precise flow rate eliminating outside weather variables that can affect heating performance. Wind conditions are eliminated and there is no need to install a high-wind stack.

Note: Hayward Universal H-Series heaters meet or exceed the South Coast Air Quality Management District (SCAQMD Rule 1146.2) and the San Joaquin Valley (SJAPCD Rule 4308) Low NOx emissions standards in all Low NOx areas that apply the SCAQMD standard.

FOR INDOOR/OUTDOOR USE

State-of-the-Art Finn Plate Heat Exchanger with Cupro Nickel



All Hayward heat exchangers are constructed of highly resilient Cupro Nickel for greater durability and longevity even in salt-based, high flow or aggressive water chemistry conditions. Our patented single header "V" baffle design heat exchangers provide for long life and fast heating.

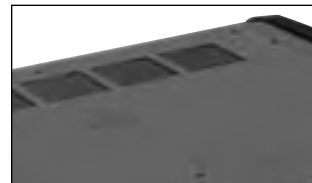
Patented Bypass Design for Superior Hydraulic Performance



New patented polymer header design provides superior hydraulic performance to save energy and protect against the damaging effects of erosion from high flow conditions for greater reliability.

2" x 1/2" CPVC unions are perfect for today's larger diameter hydraulically efficient plumbing systems.

Forced Draft System



Forced draft system constantly moves air through the combustion chamber at a precise flow rate, eliminating all outside weather variables that can effect the heating performance, such as high wind conditions — without a high wind stack.

L.E.D. Control Panel



Easy-to-read L.E.D. Control Panel provides digital temperature readout, diagnostics and electronic "lock-out" of temperature set-point.

Universal H-Series Indoor Vent Kit Matrix

INDOOR VENT ADAPTER KITS

Indoor Vent Adapter Kits Horizontal Venting - Positive Pressure

Positive Pressure – Horizontal Venting

This kit enables indoor installation where the exhaust vent pipe termination is horizontal with stainless steel vent pipe and vent terminals available from Hayward or special ordered from Heatfab Division of Selkirk Corporation or M&G DuraVent Inc. This kit **DOES NOT** allow the use of galvanized, non-sealed pipe.

Universal H-Series Model No.	Indoor Vent Kit Part Number	Description	Vent Pipe Limitations	Vent Pipe Material	Vent Termination Requirement
H150FD	UHXPOSHZ11501	Indoor Vent Adapter Kit, Positive Pressure, Horizontal or Vertical Venting Applications	50 ft max with 1 elbow, 40 ft max with 2 elbows, or 30 ft max with 3 elbows (horizontal or vertical)	Single or Double Wall Stainless Steel Sealed Vent Pipe	Horizontal or Vertical, Termination Immediately Outside Wall of House/Building
H200FD	UHXPOSHZ12001				
H250FD	UHXPOSHZ12501 UHXPOSHZ12502				
H300FD	UHXPOSHZ13001				
H350FD	UHXPOSHZ13501				
H400FD	UHXPOSHZ14001 UHXPOSHZ14002				
H500FD	UHXPOSHZ15002				

Indoor Vent Adapter Kits Vertical Venting – Negative Pressure

Negative Pressure – Vertical Venting

This kit enables indoor installations where the exhaust vent pipe termination is required to be vertically terminated a minimum of 3 feet above the roof and a minimum of 2 feet above any portion of a building within 10 feet horizontally. This kit **DOES NOT** allow horizontal vent termination.

Universal H-Series Model No.	Indoor Vent Kit Part Number	Description	Vent Pipe Limitations	Vent Pipe Material	Vent Termination Requirement
H150FD	UHXNEGVT11501	Indoor Vent Adapter Kit, Negative Pressure, Vertical Venting Applications	50 ft max vertical height, 25 ft max horizontal length (horizontal length cannot exceed 1/2 of vertical height), 3 elbows max	Single or Double Wall Galvanized Non-Sealed Vent Pipe	Vertical Only, Termination Above Roof of House/Building
H200FD	UHXNEGVT12001				
H250FD	UHXNEGVT12501				
H300FD	UHXNEGVT13001				
H350FD	UHXNEGVT13501				
H400FD	UHXNEGVT14001				
H500FD	UHXNEGVT15001				

Universal H-Series Indoor Vent Kit Matrix

INDOOR VENT ADAPTER KITS

Vent Pipe and Terminal Specifications for Positive-Pressure Indoor Vent Kits

Heater Model	Hayward Kit Part Number	Maximum Installation Altitude	Nominal Vent Pipe Diameter	Appliance Adapter	Gas	Vent Type	Vent Pipe	Horizontal Vent Terminal	Vertical Vent Terminal
H150FD H200FD	UHXPOSHZ11501 UHXPOSHZ12001	10,100 ft	6 inch	Included in UHX Kit	NAT & LP	Single-Wall	Heatfab Saf-T Vent EZ Seal P/N 960x*	Heatfab P/N 9614TERM	Heatfab P/N 5600CI
						Double-Wall	Heatfab Saf-T Vent CI Plus P/N CCA06Lx**	Heatfab P/N 9614TERM	Heatfab P/N CCA06RC
H250FD	UHXPOSHZ12501	10,100 ft	6 inch	Included in UHX Kit	NAT & LP	Single-Wall	Heatfab Saf-T Vent EZ Seal P/N 960x*	Heatfab P/N 5690CI†	Heatfab P/N 5600CI
						Double-Wall	Heatfab Saf-T Vent CI Plus P/N CCA06Lx**	Heatfab P/N CCE06WV†	Heatfab P/N CCA06RC
H250FDN	UHXPOSHZ12502	2,000 ft	4 inch	DuraVent P/N 810003683 (Included in UHX Kit) or Heatfab P/N 1501329001	NAT ONLY	Single-Wall	DuraVent FasNSeal P/N FSVLx04† or Heatfab Saf-T Vent EZ Seal P/N 940x*	DuraVent P/N FSTT4 or Heatfab P/N 9414TERM	DuraVent P/N FSRC4 or Heatfab P/N 5400CI
						Double-Wall	DuraVent FasNSeal W2 P/N W2-x04† or Heatfab Saf-T Vent CI Plus P/N CCA04Lx**	DuraVent P/N FSTT4 or Heatfab P/N 9414TERM	DuraVent P/N W2-RC4 or Heatfab P/N CCA04RC
H300FD H350FD H400FD	UHXPOSHZ13001 UHXPOSHZ13501 UHXPOSHZ14001	10,100 ft	8 inch	Included in UHX Kit	NAT & LP	Single-Wall	Heatfab Saf-T Vent EZ Seal P/N 980x*	Heatfab P/N 5890CI†	Heatfab P/N 5800CI
						Double-Wall	Heatfab Saf-T Vent CI Plus P/N CCA08Lx**	Heatfab P/N CCE08WV†	Heatfab P/N CCA08RC
H400FD H500FD	UHXPOSHZ14002 UHXPOSHZ15002	2,000 ft	6 inch	DuraVent P/N 810003725 (Included in UHX Kit) or Heatfab P/N 1501646501	NAT & LP	Single-Wall	DuraVent FasNSeal P/N FSVLx06† or Heatfab Saf-T Vent EZ Seal P/N 960x*	DuraVent P/N FSTT6 or Heatfab P/N 9614TERM	DuraVent P/N FSRC6 or Heatfab P/N 5600CI
						Double-Wall	DuraVent FasNSeal W2 P/N W2-x06† or Heatfab Saf-T Vent CI Plus P/N CCA06Lx**	DuraVent P/N FSTT6 or Heatfab P/N 9614TERM	DuraVent P/N W2-RC6 or Heatfab P/N CCA06RC

NOTES: †For DuraVent vent pipe section length, "x" should be: 6, 12, 18, 24, or 36, indicating the length of the vent pipe section in inches.

*For Heatfab single-wall vent pipe section length, "x" should be: 1, 2, 4, 5, or 7, where 1=6 inches, 2=12 inches, 4=18 inches, 5=24 inches, and 7=36 inches.

**For Heatfab double-wall vent pipe section length, "x" should be: 06, 09, 12, 18, 24, or 36, indicating the length of the vent pipe section in inches.

†For these horizontal terminals, the wall penetration is included from the vent manufacturer. On all others, it must be ordered separately.

Vent Pipe Diameters for Negative-Pressure Indoor Vent Kits

Heater Model	Indoor Vent Kit Part Number	Maximum Installation Altitude	Vent Pipe Diameter
H150FD H200FD H250FD	UHXNEGVT11501 UHXNEGVT12001 UHXNEGVT12501	10,100 ft	6 inch
H300FD H350FD H400FD	UHXNEGVT13001 UHXNEGVT13501 UHXNEGVT14001		8 inch
H500FD	UHXNEGVT15001	2,000 ft	6 inch

Hayward's induced draft heater for above-ground pools and spas combines leading technology with ease of operation and superior performance.

Featuring an electronic, direct spark ignition system and an energy-efficient FireTile® lined combustion chamber, the Hayward heater provides 100,000 BTU input for quick heating.

An integral induced draft system makes this heater completely impervious to any high wind situations. A one-piece copper header/heat exchanger provides for leak-free performance. And a simple plug-in 120 volt electric cord is provided for simple installation.

Applications – Outdoor Use Only

- Above-ground pools
- Spas (above 70 G.P.M. an external bypass is recommended)

Features

- 100,000 BTU input for above-ground pools and spas of all types and sizes
- Electronic, direct-spark ignition for total control and automatic operation
- Convenient On/Off switch to maintain consistent temperature set point
- Revolutionary induced draft technology ensures optimum heating and all-weather performance, even in high wind situations
- Reduced emissions design provides environment-friendly heating
- FireTile combustion chamber ensures quick heating
- Jet-ported stainless steel burners provide long life and easy maintenance
- One-piece copper header/heat exchanger for leak-free performance
- Cool-to-the-touch cabinet surface temperature ensures worry-free use
- Plug-in 120 volt electric cord for easy installation

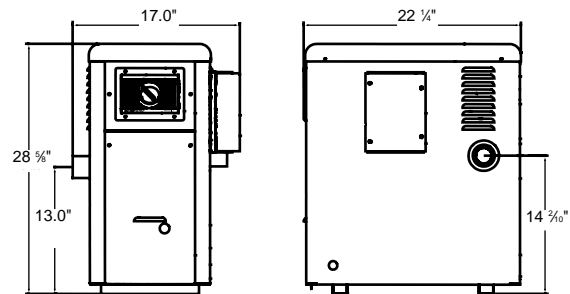


H100ID1 H-Series Induced Draft Heater

H-Series Induced Draft Heater Buying Guide

Model Number	BTU Input	Gas Type	Ctn. Qty.	Ctn. Weight
H100ID1	100,000	Natural	1	75 lbs.
H100IDP1	100,000	Propane	1	75 lbs.

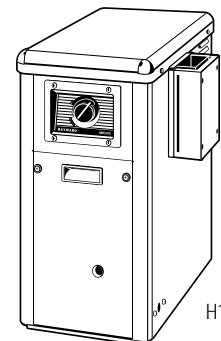
Overall Dimensions



Clip Art



H100ID1 Series



H100ID1 Series

Spa Heaters



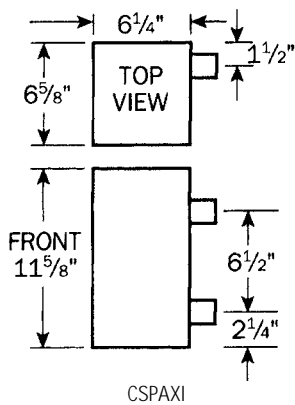
CSPAXI Series Heater

Spa Heater Buying Guide

CSPAXI Electric Spa Heaters

Model Number	KW	Voltage	Pipe Size	Ctn. Qty.	Ctn. Weight
CSPAXI55	5.5	240	1 1/2"	1	14 lbs.
CSPAXI11	11	240	1 1/2"	1	14 lbs.

Overall Dimensions



Hayward electric spa heaters contain all of the sophisticated features and capabilities of heaters twice their size. The electric heaters fit into compact spaces — even under spa skirts or steps. Like all Hayward heaters, they are easy to install and service.

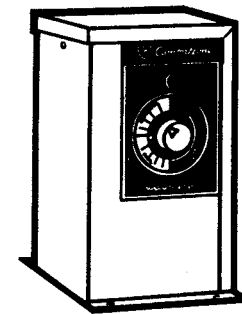
Applications

- Hot Tubs
- Spas (above 70 G.P.M. an external by pass is recommended)

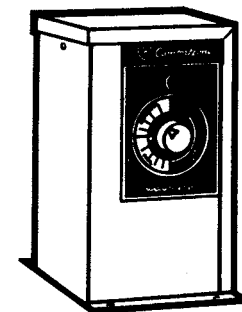
Features

- 304 stainless steel tank
- 304 stainless steel threaded head, safety sensor electric heating element
- Service-ease design gives simple access to internal controls
- Heater on indicator light
- UPS Shippable

Clip Art



CSPAXI11



CSPAXI11